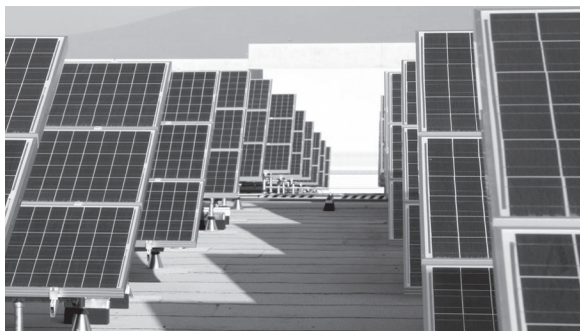


MRWPCA UPDATE

MONTEREY REGIONAL WATER POLLUTION CONTROL AGENCY

Turning wastewater into safe water since 1977 • Spring 2010



1.7 GWh Array, 14,880 Panels

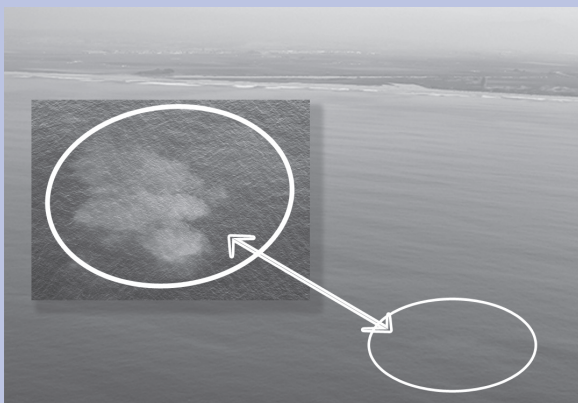
Water Recycling Plant to Go Solar

The MRWPCA Board of Directors has authorized a 1.7 GWh solar array that will provide electricity for the Salinas Valley Reclamation Projects (SVRP). “Presently, the SVRP operations rely 100 percent on PG&E for power,” states Assistant General Manager Brad Hagemann. “The solar installation will save approximately \$75,000 in energy costs per year. There are no start-up costs for SVRP or MRWPCA, and we will have the option of purchasing the solar facility at the end of the 20-year contract.”

Solar City was selected to build and operate the facility on a 5.9-acre parcel of land at the Regional Treatment Plant located two miles north of Marina. When the power plant is complete, expected to be in the latter part of 2010, the company will sell electricity to the SVRP.

Solar City serves 500 communities in California, Arizona, Colorado and Oregon. Their customers include more than 75 schools and universities; government agencies, such as the U.S. General Services Administration (GSA) and Department of Homeland Security; national landmarks such as San Francisco’s Grace Cathedral; and well-known corporate clients, including Intel and eBay.

Visit us on the web @ mrwpca.org



One method used to verify that the outfall piping is structurally intact and that the diffusers are working properly is a dye test. Pictured in the inset photo is a close-up of the harmless fluorescent yellow-green dye injected into the flow stream and observed as it surfaces.

For Desalination Brine Disposal

Agreement Reached on Use of Ocean Outfall

In January 2010, the MRWPCA Board of Directors approved an agreement with the Marina Coast Water District (MCWD) for future use of the Ocean Outfall for brine disposal from a desalination plant in north Marina. The proposed plant is an element of the Coastal Water Project designed to address the Monterey Peninsula's continuing water shortage.

Monterey County 2nd District Supervisor Lou Calcagno, who also serves as MRWPCA Board Chair, commented that "using the outfall for brine disposal will save our water ratepayers a lot of money."

The Ocean Outfall presently is used for the safe disposal of treated wastewater from MRWPCA's Regional Treatment Plant two miles north of Marina. The outfall, which begins as a 60-inch diameter concrete pipe, narrows to 48 inches over its last 1,400 feet, diffusing the water through a series of small holes.

For additional information on the agreement, or to learn more about the proposed water project, call the MRWPCA Administrative Offices.

Monterey Regional Water Pollution Control Agency

Administrative Offices

5 Harris Court, Bldg D, Monterey, CA 93940

(831) 372-3367 or (831) 422-1001