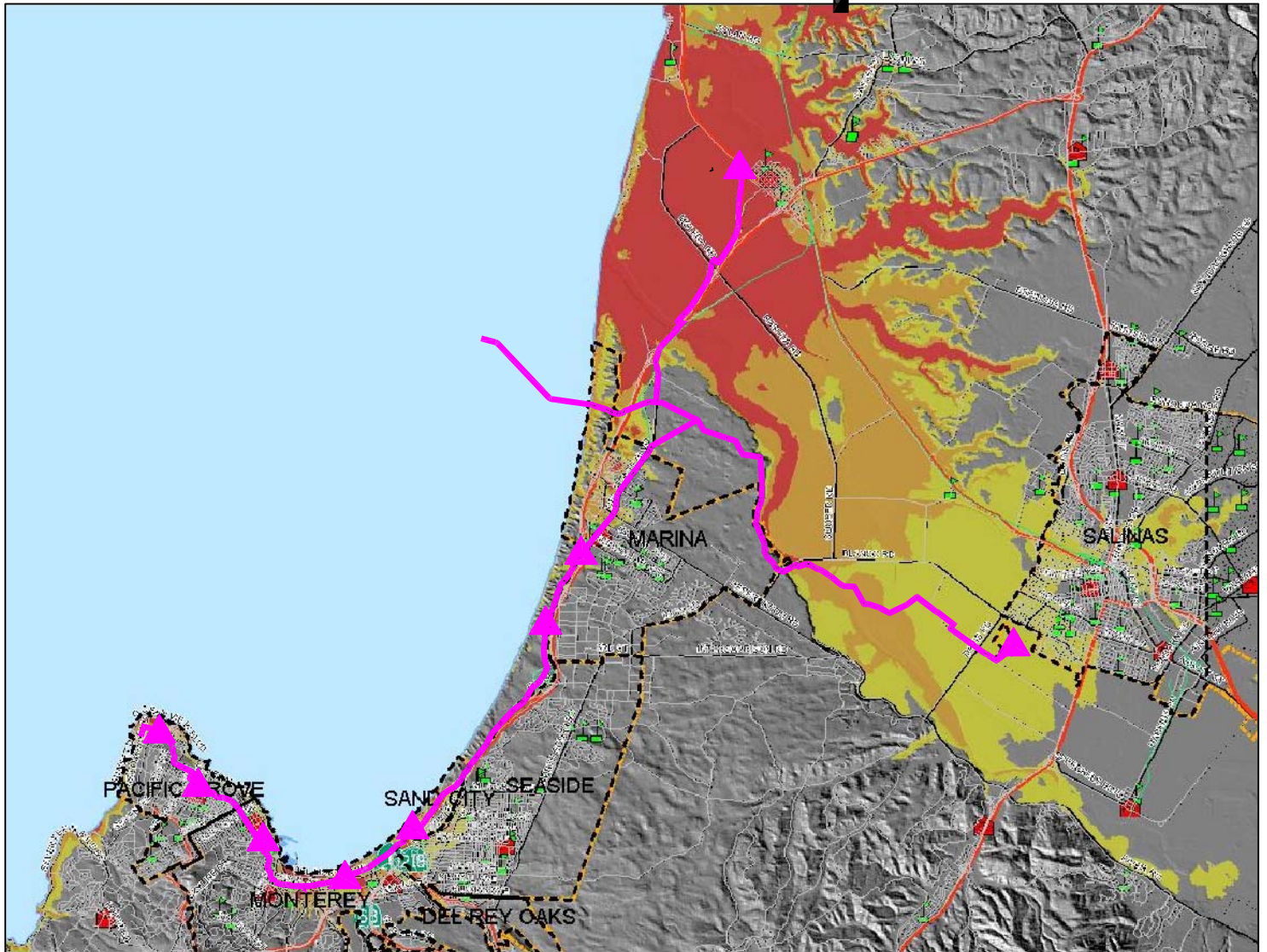










Tsunami Evacuation Areas Map



LEGEND

-  CITY LIMIT LINES
-  STREETS & HIGHWAYS
-  RAILROADS
-  REGIONAL INTERCEPTORS
-  PUMP STATION
-  0-5 feet
-  5-10 feet
-  10-15 feet

Note: Potential Tsunami wave runup is indicated by height contours measured in feet.

Figure 5-10 Tsunami Evacuation Areas Map